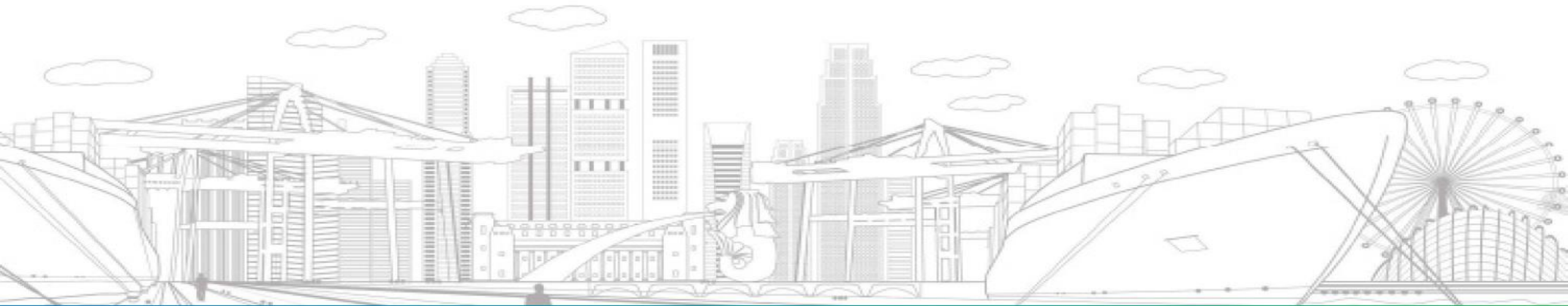


GeoSpace-Sea

Singapore's National Marine Spatial Data Infrastructure (NMSDI)

Maritime and Port Authority of Singapore (MPA)

10th IHO Marine Spatial Data Infrastructure Working Group



Singapore's Sea Space

Utilisation of Singapore's limited Sea Space



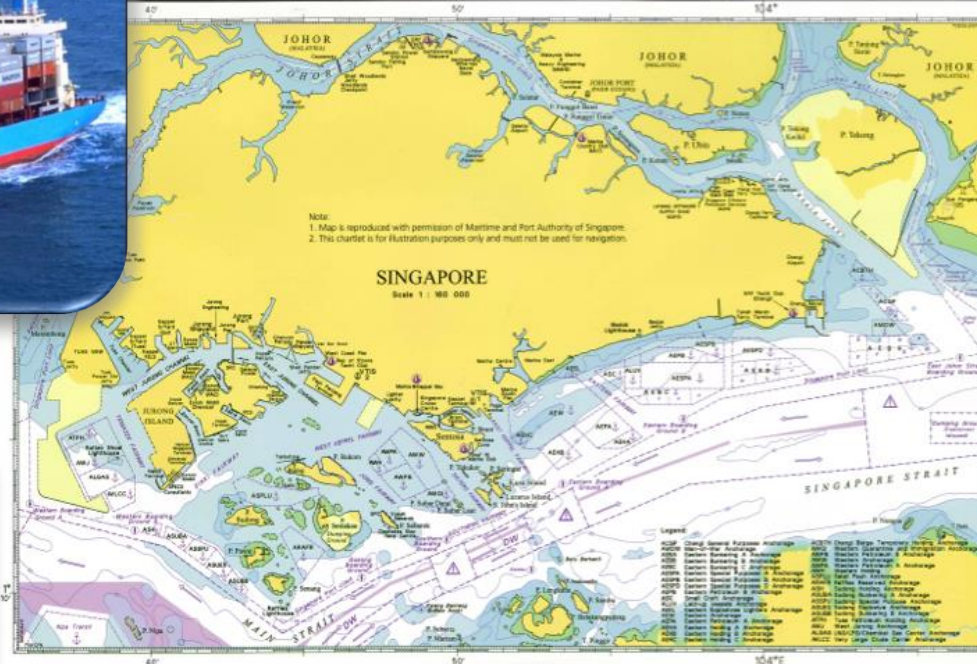
Waterfront Use Planning



Aquaculture



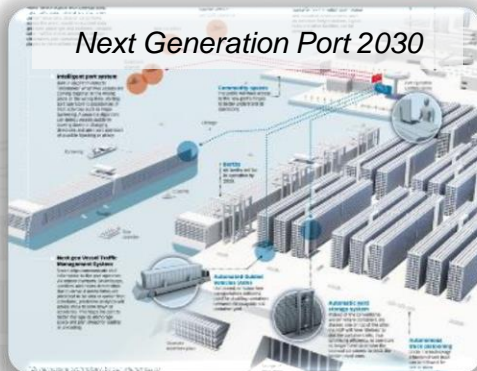
Shipping & Navigation



Submarine Cables/Pipelines



Recreation



Sea Space Planning



Power Plants/Refineries



Marine Biodiversity



Desalination Plants



Reclamation & Dredging



Tourism

Rationale for GeoSpace-Sea

DRIVE

- Increasing demand for limited sea and coastal space
- Efficient sea, port and coastal space planning involving multiple stakeholders
- Address the Blue Economy
- Marine environmental and biodiversity conservation
- Marine R&D for climate change adaptation
- Disaster response

NEED

- Data interoperability
- Geo-referenced data and information
- Holistic management of land-and-sea

CHALLENGES

- Data is not always available or interoperable
- Data collation is time consuming
- Lack of common data standards
- Duplication of efforts

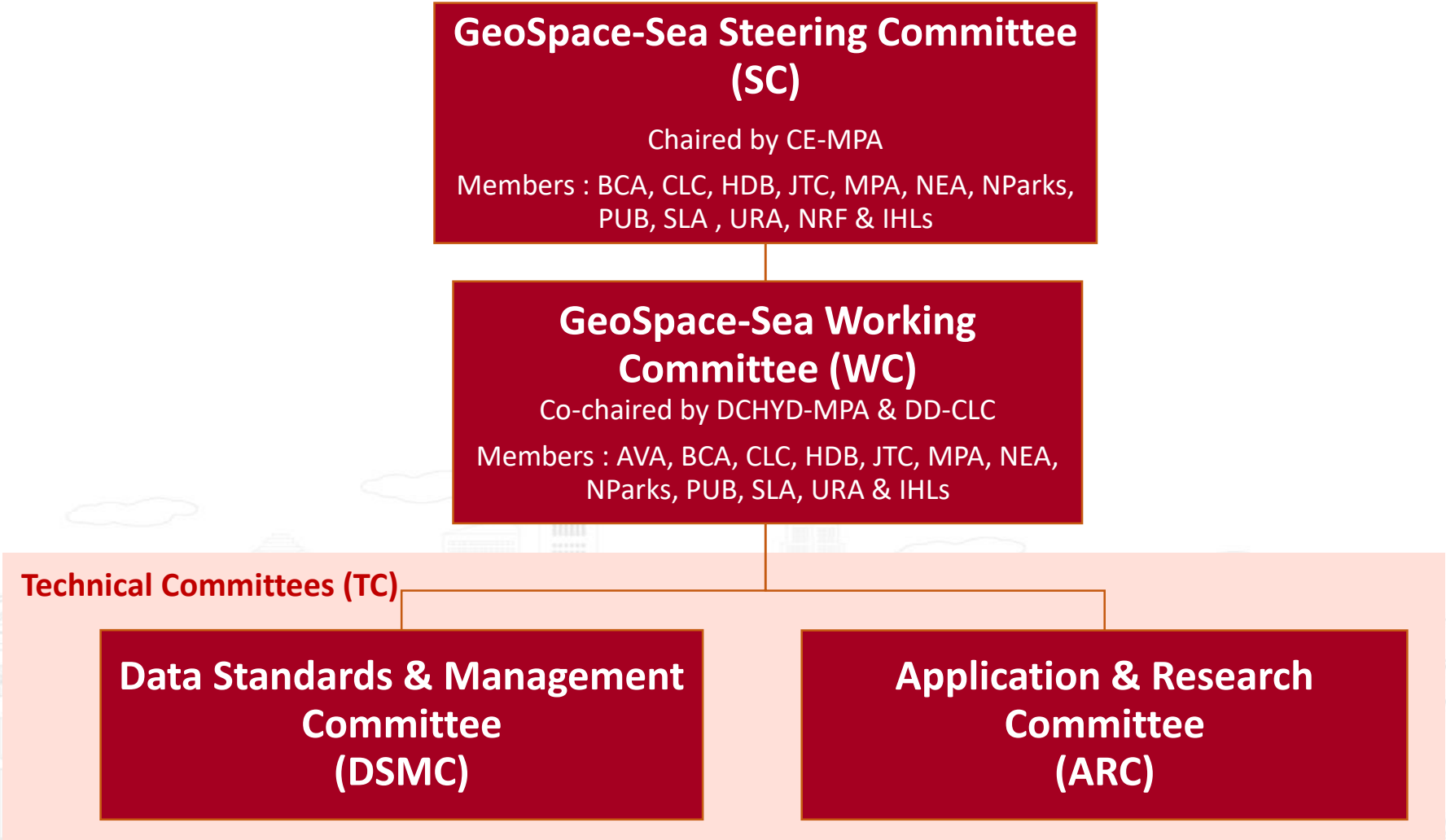
SOLUTION



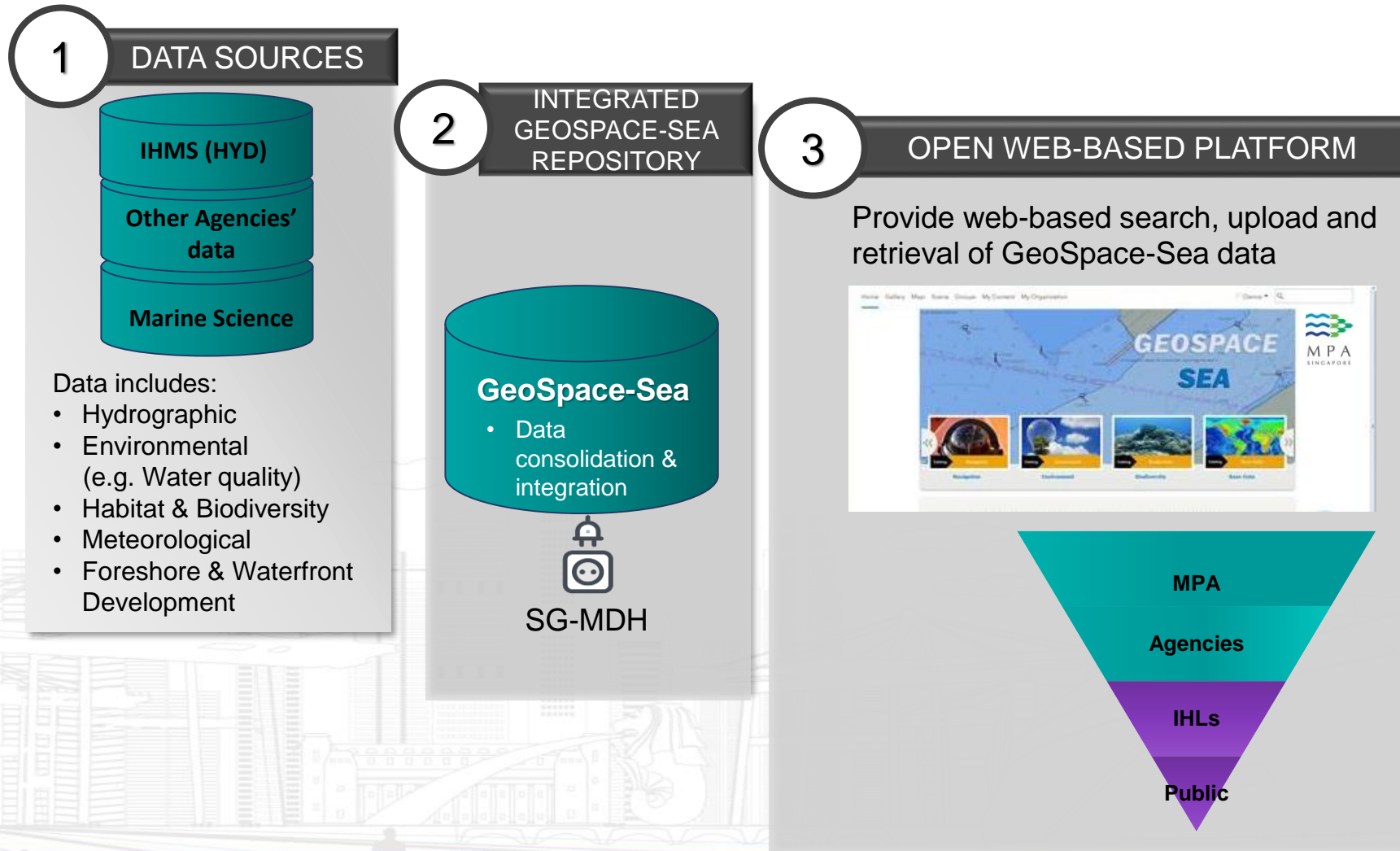
GeoSpace-Sea

A single integrated data platform for users' seamless access to quality marine information for various applications.

GeoSpace-Sea Governance Structure



Implementation Plan – Integrated, Open, Web-based Platform



Implementation Plan - Web-based Applications

Web-based search, upload and retrieval platform

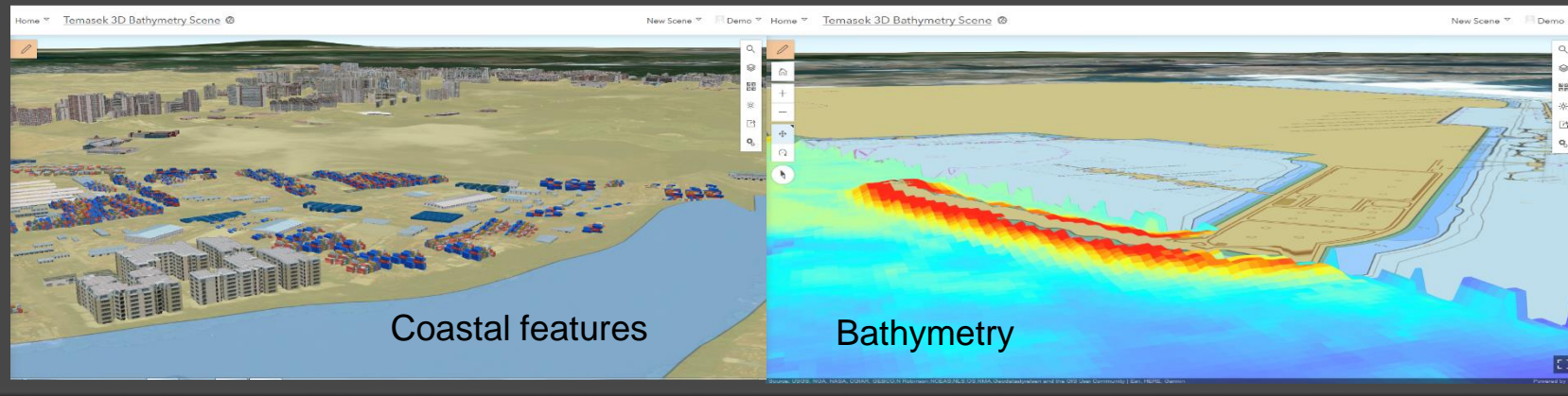


2D Viewer

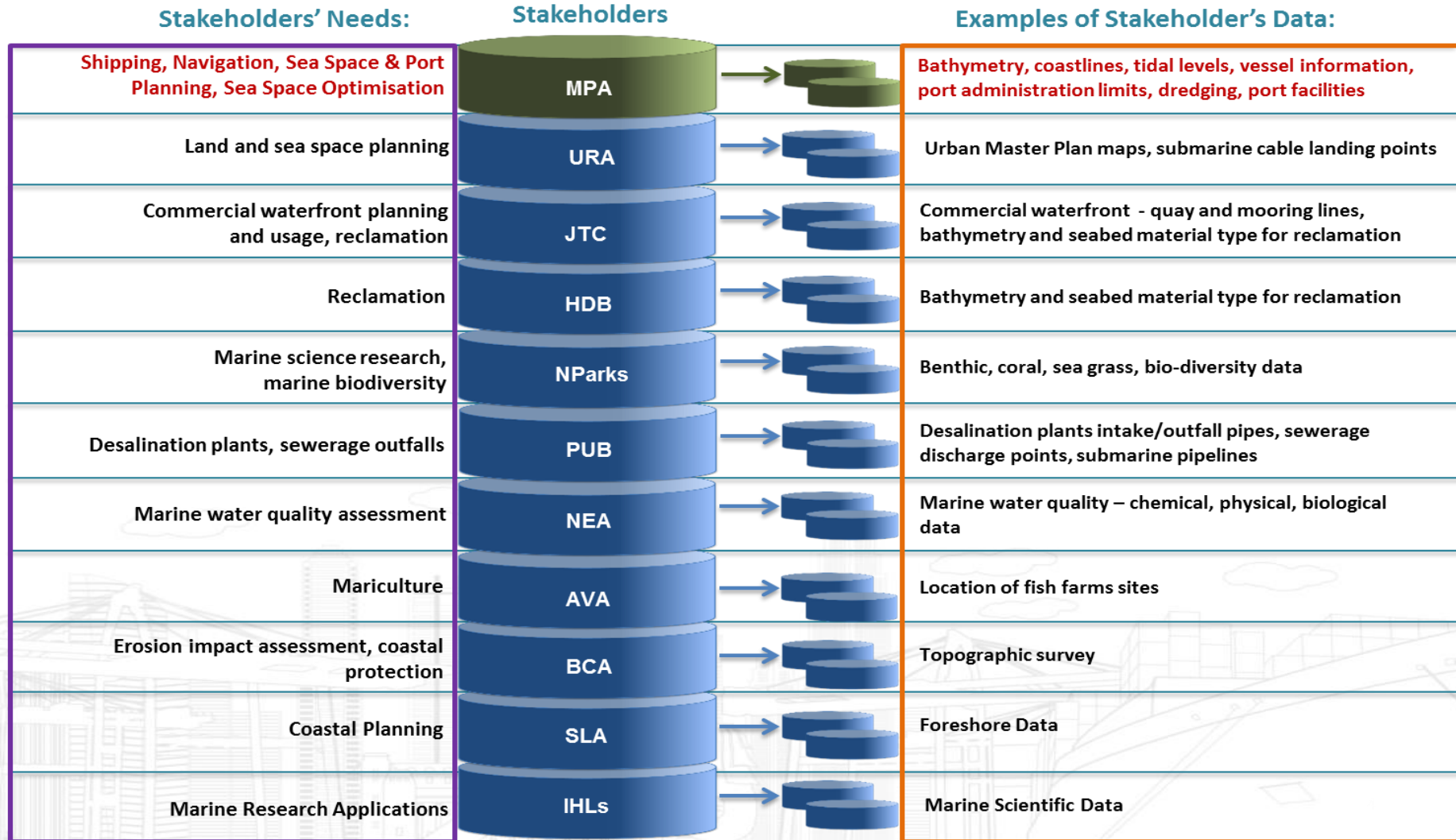
- Functions to overlay agencies' data



3D Viewer



Data and use-cases: Hydrographic and non-hydrographic





MPA
SINGAPORE



MARITIME
SINGAPORE

